



Black Lodge Courchevel 1850



What we love...

We love the leisure floor with its spa, swimming pool, games room and cinema.

All the privacy of a private home combined with the benefits of a top hotel, Black Lodge, Courchevel 1850, is the last word in luxury ski holidays.

This five-storey building has incredible views and floor-to-ceiling windows that make the most of its south-facing aspect, filling the rooms with sunshine in the daytime.

The main living spaces are cathedralesque in their design, with vaulted ceilings, huge windows and open-plan areas for you to relax in. The heart of this space is the enormous statement fireplace in the lounge area. Relaxing on the capacious sofas and armchairs and watching the flames dance as the snow falls outside is a wonderful way to spend an evening. Nearby is a stylish, contemporary dining space, with refectory table and amazing views, where a chef, butler and the rest of the team will serve up hearty breakfasts, afternoon teas and a gourmet lunch or dinner each day.

While Black Lodge is in an excellent location for the slopes, on 'stay at home days' or chilly afternoons post

ski, there's lots to keep everyone entertained on the dedicated 'leisure floor'. Catch a film in the cinema room, have a game of snooker or table football in the games room, or simply head to the spa for a swim, a sauna or Hammam, or to enjoy a massage in the treatment room. The bar on the leisure floor is always open for a drink, and there's also a gym and a practical ski room to complete the leisure space.

If you fancy a little time to yourself, take a book to the reading lounge, or take yourself outdoors onto the terraces to enjoy the peace and the mountain air.

At the end of each day, you'll retire to one of the seven en-suite bedrooms, all decked out with luxury linens and bath products to ensure you end each day feeling completely relaxed.

With staff on hand and every detail taken care of, from fresh flowers on arrival to your favourite tipples at the bar, everything is taken care of for you at Black Lodge, Courchevel 1850.



Black Lodge

Rooms

Black Lodge sleeps 14 guests across seven bedrooms.

Bedroom 1

Double bedroom with TV and en-suite bathroom

Bedroom 2

Double/twin bedroom with TV, dressing room, balcony and en-suite shower room

Bedroom 3

Double bedroom with TV, balcony and en-suite shower room

Bedroom 4

Double bedroom with TV, terrace and en-suite bathroom

Bedroom 5

Double bedroom with TV, balcony and en-suite bathroom

Bedroom 6

Double/twin bedroom with TV and en-suite shower room

Bedroom 7

Master bedroom with TV, dressing room, terrace and en-suite bathroom

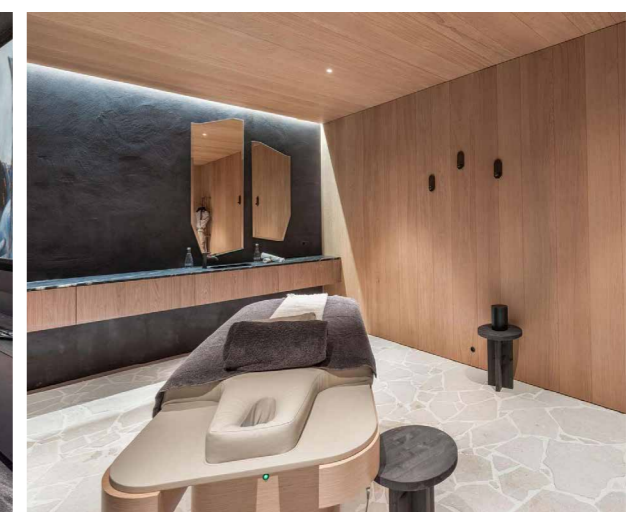
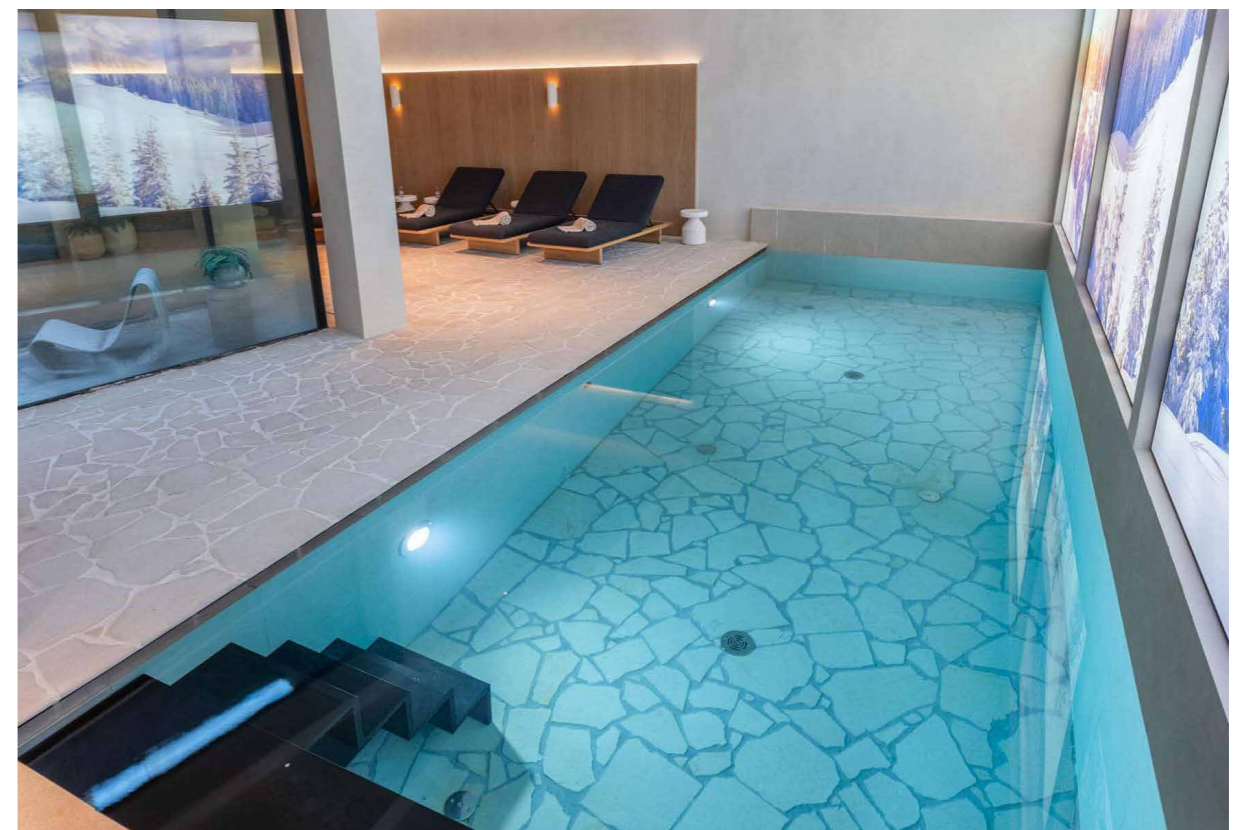
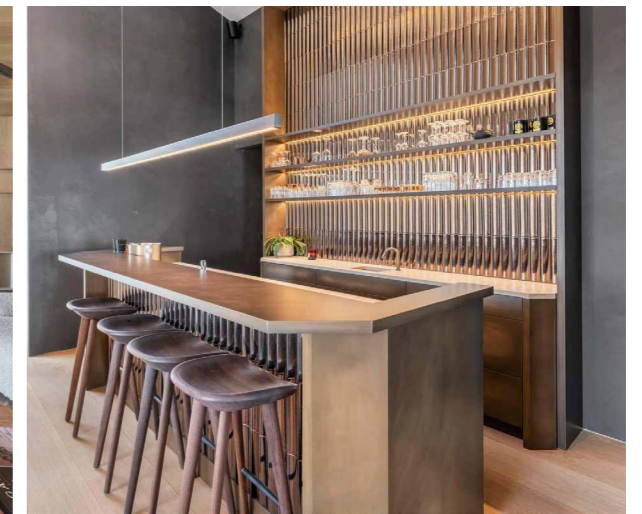
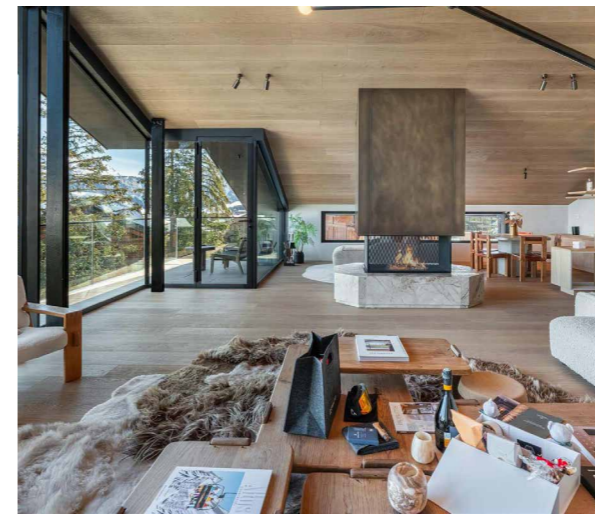
Eating

You'll be very well fed and watered during your stay at Black Lodge. A welcome basket and champagne are ready for your arrival and from that moment you'll be looked after by a private chef and a team of staff who will prepare energising breakfasts each morning before you head out and warming afternoon teas on your return from mornings out in the snow. Additionally, depending on how you plan your days, you can choose for your chef to prepare either a delicious lunch or dinner.

The stunning dining room that seats 14 and has panoramic views is the perfect place to enjoy long, leisurely meals. A well-equipped kitchen includes top-of-the-range appliances such as an electric juice press and fondue appliance.

There is a plethora of fabulous restaurants for lunches on the mountain and plenty more great eateries in the town at Courchevel 1850. If you need help with booking tables, your chalet team will be happy to help.

Please note that the cost of food and drinks will be charged for separately at the end of your stay.





Black Lodge

Kids

There's plenty to keep kids occupied while off the slopes in this family-friendly luxury ski chalet.

The private indoor pool is perfect for kids of all ages to have a splash in after ski school. There's also a games room with table football and pool table for older ones, as well as a private cinema where they can settle down for an afternoon movie matinee.

Childcare and ski lessons can be arranged on request.

Location

Black Lodge is a luxury ski chalet in Courchevel, hidden away in the peaceful Chenus area and just 75 metres from the Petit Dou slope.

The property is less than a kilometre to both the nearest ski lift and the centre of Courchevel and you'll have use of a chauffeured car for 10 hours a day.

The nearest airports are Chambéry (1h 45mins away) and Grenoble (1hr 50mins away). Geneva is 2h 30mins away.

Staff

Firefly pre-arrival concierge service

Chalet staff include:

- Chef (10h/day)
- Butler (10h/day)
- Housekeeper (8h/day)
- In-resort driver (10h/day)
- In-resort concierge

Additional staff such as nannies and massage therapists can be arranged on request.

Facilities

- Indoor swimming pool
- Fireplace
- Sauna
- Hammam
- Gym
- Indoor Jacuzzi
- Wifi
- Apple TV
- Lift
- Massage room
- Garage parking
- Ski room
- Bar area
- Panoramic view
- Cinema and games room
- Pool and football tables

