



Sasha Apartment 4 Courchevel 1850



What we love...

We love the location of this apartment, with ski-in/ski-out access and the ski lift right next door, so you can always be first on the snow.

Sleek and modern, Sasha Apartment 4 combines contemporary style with laid-back comforts perfectly.

A lift takes you straight into the heart of the apartment, where huge windows allow sunlight to flood the living space. Large corner sofas and mid-century armchairs give everyone a comfy seat from which to enjoy the views of the slopes, relax with the papers or engage a friend in a game of chess.

Nearby is an uber-modern kitchen, well kitted out with all you need to prepare meals for your party. A stylish table and modern-retro chairs surrounding it, tastefully lit using statement lighting, provide a simple but elegant backdrop for meals with friends and family.

Outdoor spaces are not forgotten either, with a large terrace with outside living area, from where you can sit with your morning coffee or an après-ski tipple in hand.

Once you return from the slopes each day, you can spend lazy afternoons making the most of this wonderful apartment and its fabulous views, or perhaps just sprawl in front of a movie. Sasha Apartment 4 has two TV rooms – one a snug TV area with roaring fire, and the other more of a home cinema room, with huge seats to curl up in. Just add popcorn.

As the day draws to a close you can look forward to beautifully cosy bedrooms, each decorated in their own colour palette and marble, private or shared en-suite bathrooms, as well as fluffy bathrobes and slippers and lots of little luxuries to make your stay special. Your housekeeper will pop in daily, so your only job at Sasha Apartment 4 is to relax.



Sasha Apartment 4

Rooms

Sasha Apartment 4 sleeps 6 + 4 guests across five bedrooms.

Bedroom 1

Master bedroom with en-suite shower room, TV and desk area

Bedroom 2

Double bedroom with en-suite shower room

Bedroom 3

Double bedroom with en-suite shower room

Bedroom 4

Twin bedroom with shared en-suite shower room

Bedroom 5

Twin bedroom with shared en-suite shower room

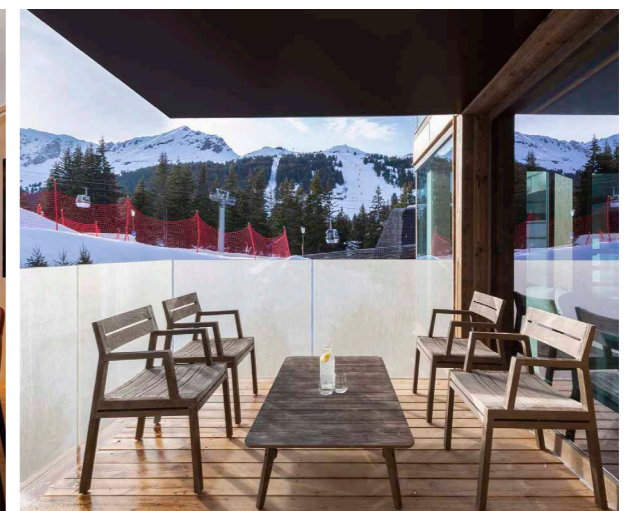
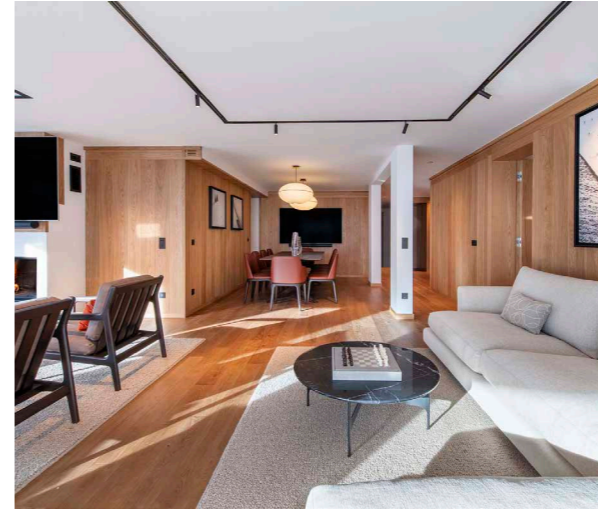
Eating

You'll enjoy plenty of flexibility at Sasha Apartment 4, with the property available on either a self-catered or bed and breakfast basis.

Those taking breakfast will wake to a continental meal of bread and pastries, delivered fresh from the local bakery, as well as local meats and cheeses, artisan yoghurts and accompanying jams and honey. Tea, coffee and juice are on tap to let you acclimatise to the day slowly.

If self-catering you may like to take advantage of the chalet's pre-arrival shopping service, so you'll know that everything you might need is ready and waiting for you, and stowed away in the cupboards before you arrive.

Sasha has a sleek and modern kitchen, which makes cooking a pleasure. A mid-century style dining area, with space to seat 10 in comfy leather chairs, provides the perfect backdrop for laid-back meals.





Sasha Apartment 4

Kids

This family-friendly ski chalet in Courchevel makes a great base for a family group to explore the local area from. Two of the five bedrooms are arranged as twin rooms to suit children of any ages, and the property has a cot and highchair available should you need them.

Being close to the piste and gondola station makes getting out on the snow with kids in tow a cinch. When they're home from the slopes or ski school in the afternoons, there are not one, but two TV rooms where they can recharge in front of a movie matinee or cartoons.

Nannies and babysitters can be booked on request so grown-ups are able to get out and explore the area in the evenings or enjoy a little time skiing alone.

Staff

Firefly pre-arrival concierge service

Chalet staff include:

Housekeeper

In-resort concierge service

Additional staff such as nannies and massage therapists can be arranged on request.

Location

Sasha Apartment 4 is a luxury ski chalet in the Jardin Alpin area of Courchevel 1850. The gentle Le Jardin Alpin piste is just a short distance away, with the gondola station just across the road. The centre of Courchevel is approximately an 8mins drive.

The nearest airport is Chambéry, which is around 1 hour 30 minutes away. Lyon and Grenoble are each just over 2 hours away and Geneva is 2 hours 20 minutes away. The nearest train station is 30 minutes away at Moutiers.

Facilities

Wifi

Elevator

Sun terrace

Fully fitted kitchen

Open-plan living area

Feature fireplace

Two separate TV rooms

Adjacent to gondola station

Close to Le Jardin Alpin piste

