



Chalet Acajuma Val d'Isere



What we love...

We love the private wellness area equipped with a Jacuzzi and sauna, perfect for unwinding after a day on the slopes.

Nestled in Le Petit Alaska area of Val d'Isère, this luxury ski chalet has a rustic wood and stone exterior that's entirely in keeping with the woodland and mountainside surrounding it. Spanning four floors, Chalet Acajuma is at once cosy and spacious, with bright alpine interiors and modern facilities promising a truly special luxury ski holiday.

Start your days at Chalet Acajuma in one of the five comfortable bedrooms, decorated with wooden panelling and sumptuous fur throws. Each has its own private or en-suite bath or shower room, and some even have their own balcony where you can admire the snowy treetops glistening in the morning sun. Collect your equipment and toasty boots from the ski room, and prepare for a day on the pistes.

When you return, Chalet Acajuma's delightful wellness area beckons, where you can soothe tired legs in the sauna or indoor Jacuzzi. Head upstairs for a well-deserved apéritif, which you can enjoy from the expansive sofas while a fire flickers in the impressive stone fireplace. On sunny days you can take your drink out onto the snowy terrace.

Chalet Acajuma's cleverly designed living space connects the sitting room with the large kitchen and dining area, so you can heat up delicious pre-prepared dishes while your loved ones tuck into pre-dinner nibbles nearby. After your evening meal, retire to the TV room for a movie or games night, the ideal way to end your day of adventures.



Chalet Acajuma

Rooms

Chalet Acajuma sleeps 10 guests across five bedrooms.

Bedroom 1:
Double/twin bedroom on first floor with en-suite bathroom.

Bedroom 2:
Double bedroom on first floor with en-suite shower room.

Bedroom 3:
Double bedroom on third floor with en-suite bathroom.

Bedroom 4:
Double bedroom on third floor with en-suite shower room, balcony access and separate WC.

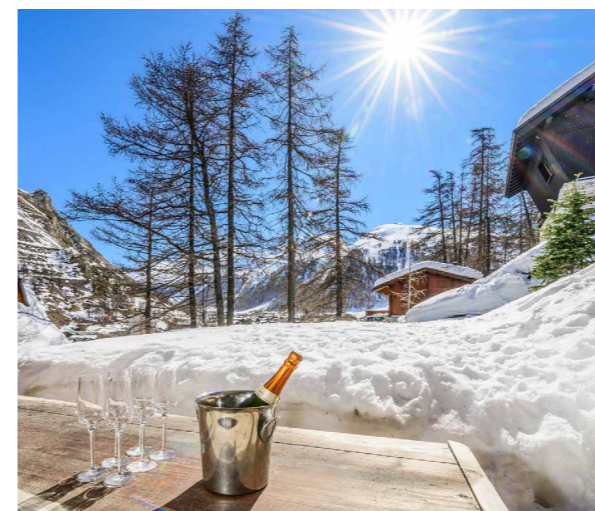
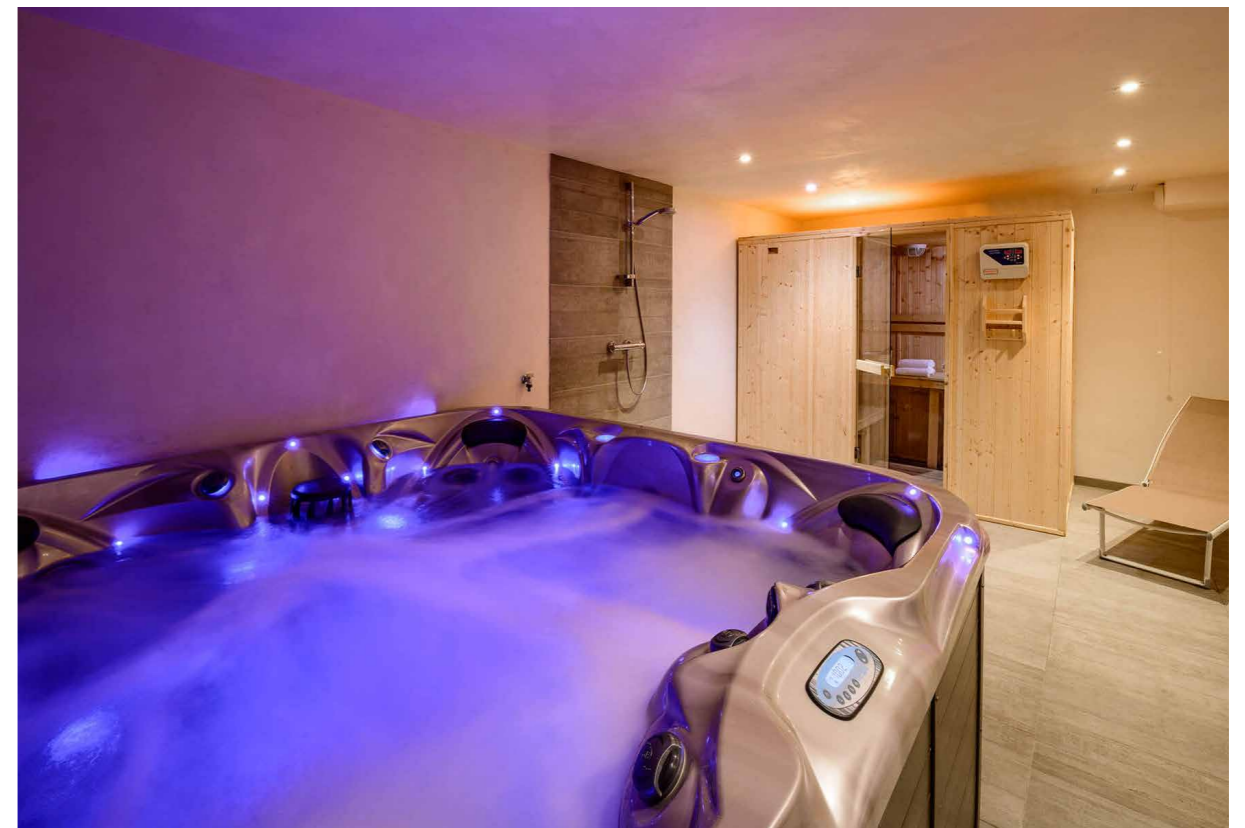
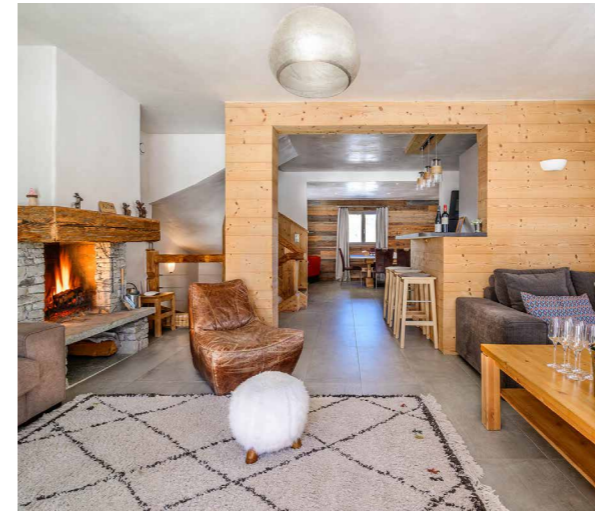
Bedroom 5:
Double/twin bedroom on third floor with separate shower room.

Eating

Available with a choice of service level, Chalet Acajuma gives you the flexibility to choose how and when you dine.

With the contactless catering service, you'll arrive at your new home-from-home to find the kitchen stocked with freshly prepared dishes for you to reheat, and local ingredients for salads and sides. There are enough supplies for breakfast and afternoon tea every day, three-course dinners (with nibbles and cheese) on six nights, and complimentary drinks including a Champagne reception.

The self-catered service is ideal for those who love to cook and want to take advantage of the fully equipped kitchen with its range of modern appliances. Alternatively, make the short walk into Val d'Isère and you'll be spoilt for choice when it comes to cafés, restaurants, and bars.





Chalet Acajuma

Kids

Chalet Acajuma is packed with facilities your children will love, from the indoor Jacuzzi to the TV room filled with games and a Smart TV. If you can tear them away from the chalet, the in-resort driver service (08:30-10:00 and 16:00-18:00, excluding Saturdays) is on hand to whisk the whole family to the slopes and back.

Please note that Chalet Acajuma is located on a steep mountain road, which is not well suited to little legs or pushchairs. We recommend using the in-resort driver service if you wish to travel into the resort centre.

It's possible to have equipment and lift passes delivered to your door, so there's no need to drag your little ones into the centre on your arrival day.

Cots and high chairs can also be arranged if requested in advance.

Facilities

- Sauna
- Indoor Jacuzzi
- Wood-burning fireplace
- Fully-equipped kitchen
- Wifi
- Ski and boot room
- Sun terrace
- Separate TV room

Location

Chalet Acajuma is situated in the Le Petit Alaska area of Val d'Isère, a 10-minute walk from the resort centre and snow front. You'll also benefit from an in-resort shuttle service in the morning and afternoon.

The closest airport is Chambéry, approximately 2 hours away. Another convenient airport is Geneva, a little under 3 hours away.

Staff

Firefly pre-arrival concierge service

Chalet staff include:
Resort manager
Housekeeper
In-resort shuttle service
In-resort concierge

Additional staff such as nannies and massage therapists can be arranged on request.

