



## Chalet Arda Val d'Isere



### What we love...

We love the charming Nordic-style outdoor hot tub, commanding privileged views of the surrounding peaks.

Tucked away in Le Petit Alaska area of Val d'Isère, Chalet Arda enjoys a peaceful location with panoramic views of the valley and craggy peaks above, yet is just 8 minutes on foot from the resort's vibrant centre. This luxury ski chalet spans two floors characterised by rustic wooden beams, sumptuous soft furnishings, and large windows flooding each room with natural light.

The heart of Chalet Arda is its bright open-plan living space, where floor-to-ceiling windows showcase breathtaking views of the mountainside. If you'd like to get a closer look, head out onto the terrace where the steaming Nordic-style hot tub beckons for you to soak aching muscles with a glass of Champagne in hand. Afterwards, sink into the cloud-like L-shaped

sofa and watch the sun dip behind the summits as a fire crackles in the elegant modern fireplace.

Chalet Arda's spacious, well-equipped kitchen and dining area provides the ideal setting for memorable meals with family and friends. Once you've tucked into your evening meal, retreat to one of the four cosy bedrooms which, with their mountain views and wooden detail, exude alpine charm. Each has its own en-suite bath or shower room decked out with beautiful stone sinks and tiling.

Complete with a convenient private ski room for storing your equipment, Chalet Arda has everything you need for an unforgettable luxury ski holiday.





## Chalet Arda

### Rooms

Chalet Arda sleeps 8 guests across four bedrooms.

**Bedroom 1:**  
Double bedroom on first floor with en-suite shower room.

**Bedroom 2:**  
Double bedroom on second floor with en-suite shower room.

**Bedroom 3:**  
Double bedroom on second floor with en-suite bathroom.

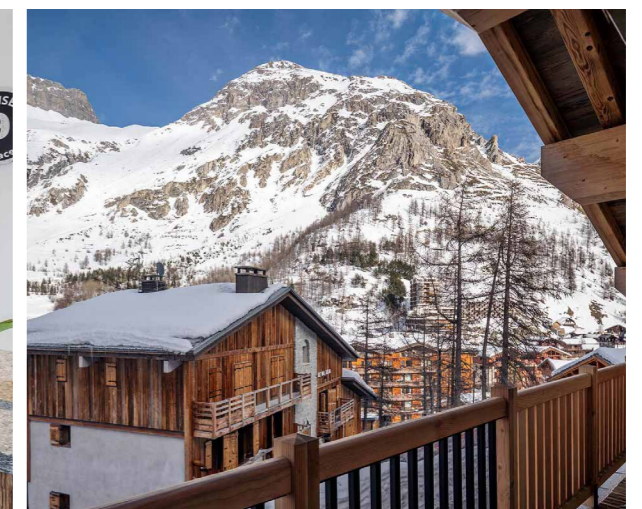
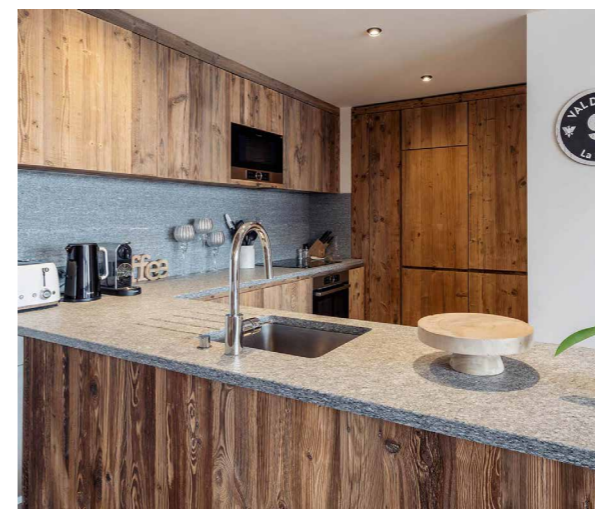
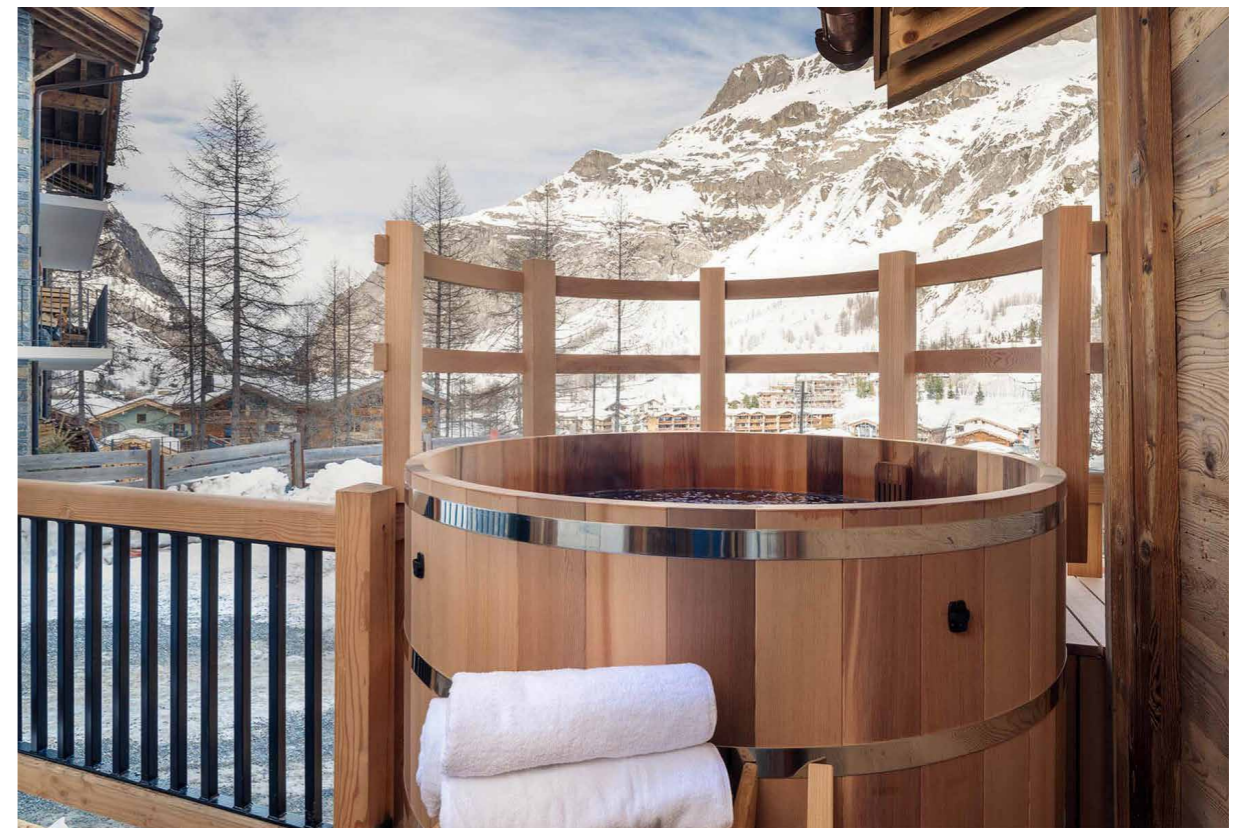
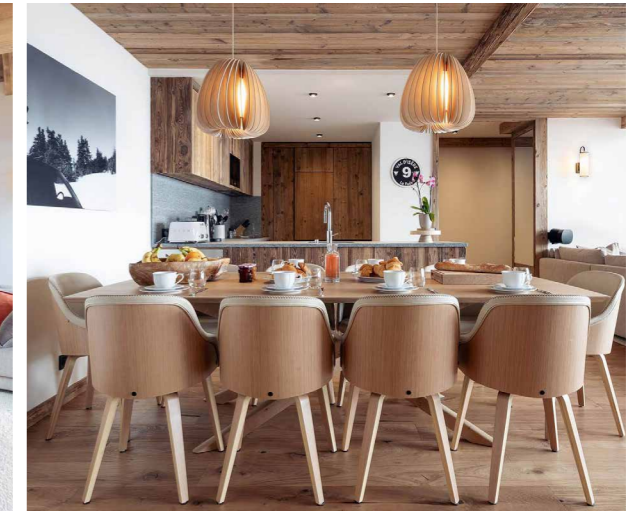
**Bedroom 4:**  
Double/twin bedroom on second floor with en-suite bathroom.

### Eating

Chalet Arda is available with a choice of catering level to ensure your luxury ski holiday is exactly how you like it.

With the contactless catered service, you'll arrive to discover your fridge and cupboards are fully stocked with lovingly prepared meals and fresh ingredients. All you need to do is decide when you'd like to eat, reheat the dishes, and throw together a side or salad. There are supplies for a hearty breakfast and afternoon tea each day, plus dinner (with nibbles) on six nights. There are even complimentary drinks, including a glass of Champagne on the first evening.

If you prefer to prepare your own feasts, you can choose the self-catered service and take advantage of the chalet's fully equipped kitchen. For those who like to try the local cuisine, Val d'Isère's renowned bar and restaurant scene is a short walk away.







## Chalet Arda

### Kids

With its central location and friendly open plan layout, Chalet Arda is perfect for families. Children will love splashing around in the outdoor hot tub, or settling down with a film while you tuck into pre-dinner nibbles at the dining table nearby. Cots and high chairs are available on request.

Getting the whole family to the slopes each morning is a breeze, thanks to the in-resort driver service (08:30-10:00 and 16:00-18:00, excluding Saturdays).

Childcare and ski lessons can be arranged on request.

### Location

Chalet Arda overlooks Val d'Isère from the hillside in the exclusive Le Petit Alaska area. The snow front and resort centre are just an 8-minute walk away.

The closest airports are Chambéry and Geneva, approximately 2 and 3 hours away respectively.

### Staff

Firefly pre-arrival concierge service

Chalet staff include:  
Resort manager  
Housekeeper  
In-resort shuttle service  
In-resort concierge

Additional staff such as nannies and massage therapists can be arranged on request.

### Facilities

Outdoor hot tub  
Wood-burning fireplace  
Wifi  
Balconies  
Ski and boot room  
Fully fitted kitchen  
Open-plan living area

