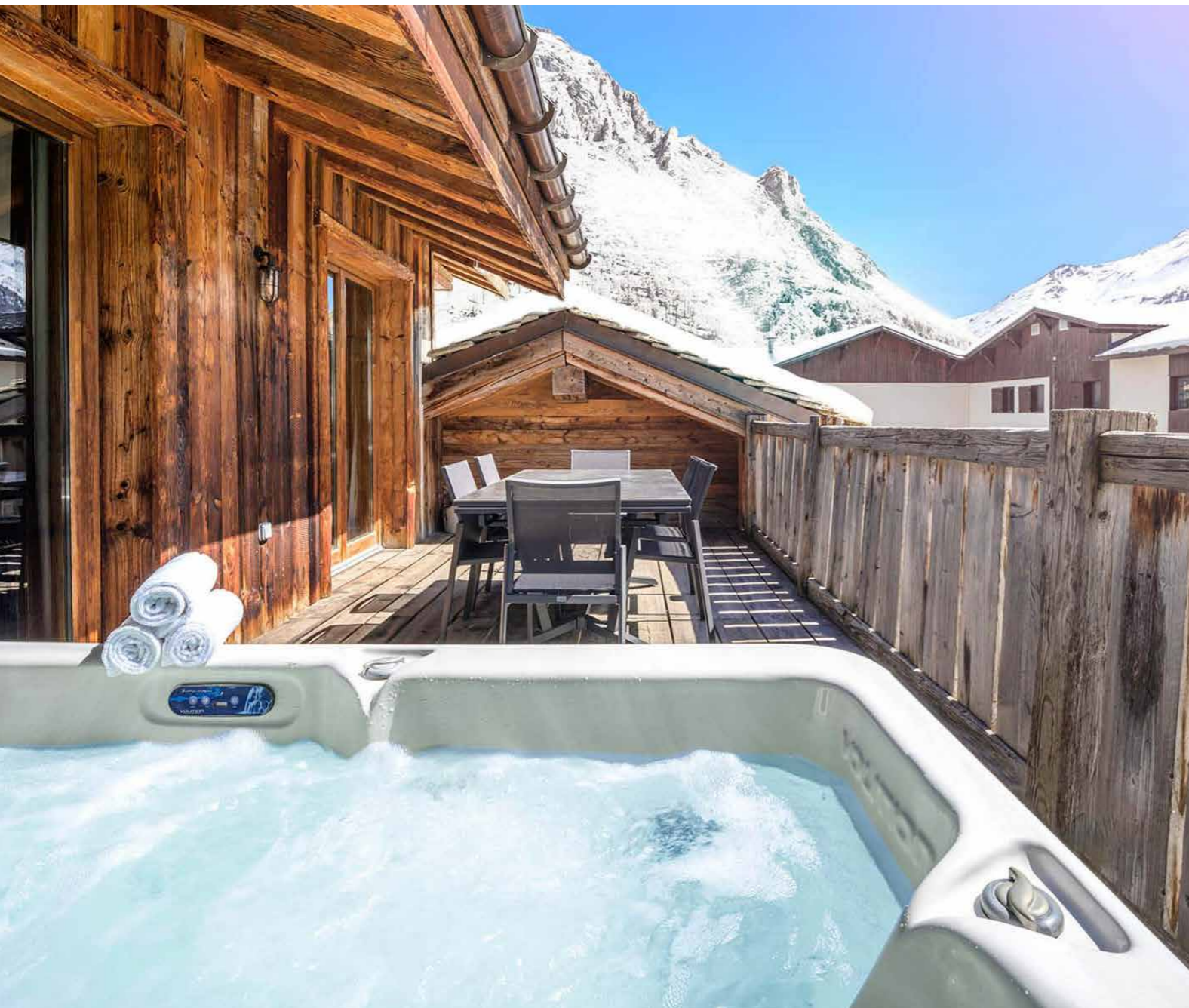




## Chalet Jupiter Val d'Isere



### What we love...

We love the striking open plan living space, with its double-height ceilings, wooden beams, and beautiful stone fireplace.

Chalet Jupiter has all the ingredients of a luxurious yet homely alpine retreat, from its coveted central location to its superb spa facilities. Peppered with original stone and timber features and quirky modern furnishings, this luxury ski chalet offers a seamless blend of old and new, with warm splashes of colour throughout.

After a day carving down the pistes of Val d'Isère, return your equipment to Chalet Jupiter's dedicated ski room and head straight for the indoor Hammam or outdoor hot tub, where you can relax aching legs while gazing at the snow-capped peaks above. The south-facing balcony provides a sunny spot for you to sip your apéritif and tuck into the afternoon tea.

Inside, the comfortable leather sofas beckon for you to sink into them while a fire crackles in the stunning, traditional stone fireplace nearby. The open plan kitchen and dining area, with its double-height ceilings, bar seating, and statement light fitting suspended over the table, makes a striking backdrop for your evening meals.

Chalet Jupiter's four charming bedrooms are decked out in richly coloured wood and opulent soft furnishings; it's hard to imagine a cosier place to lay your head. The crowning glory, however, is the sprawling master bedroom, occupying the entire top floor and boasting an enormous walk-in shower and standalone bath tub.



# Chalet Jupiter

## Rooms

Chalet Jupiter sleeps 8 guests across four bedrooms.

**Bedroom 1:**  
Master bedroom on top floor with open bath and shower.

**Bedroom 2:**  
Double bedroom on ground floor with en-suite shower room.

**Bedroom 3:**  
Double bedroom on ground floor with en-suite shower room.

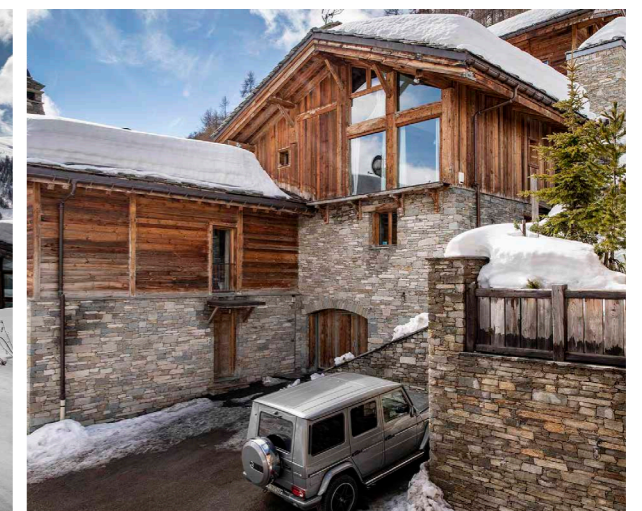
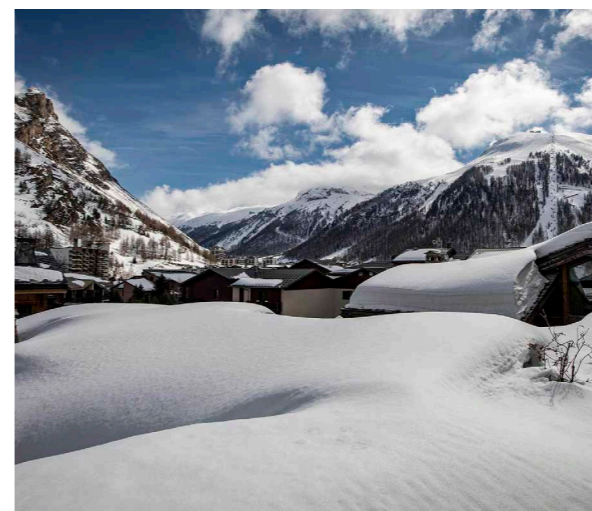
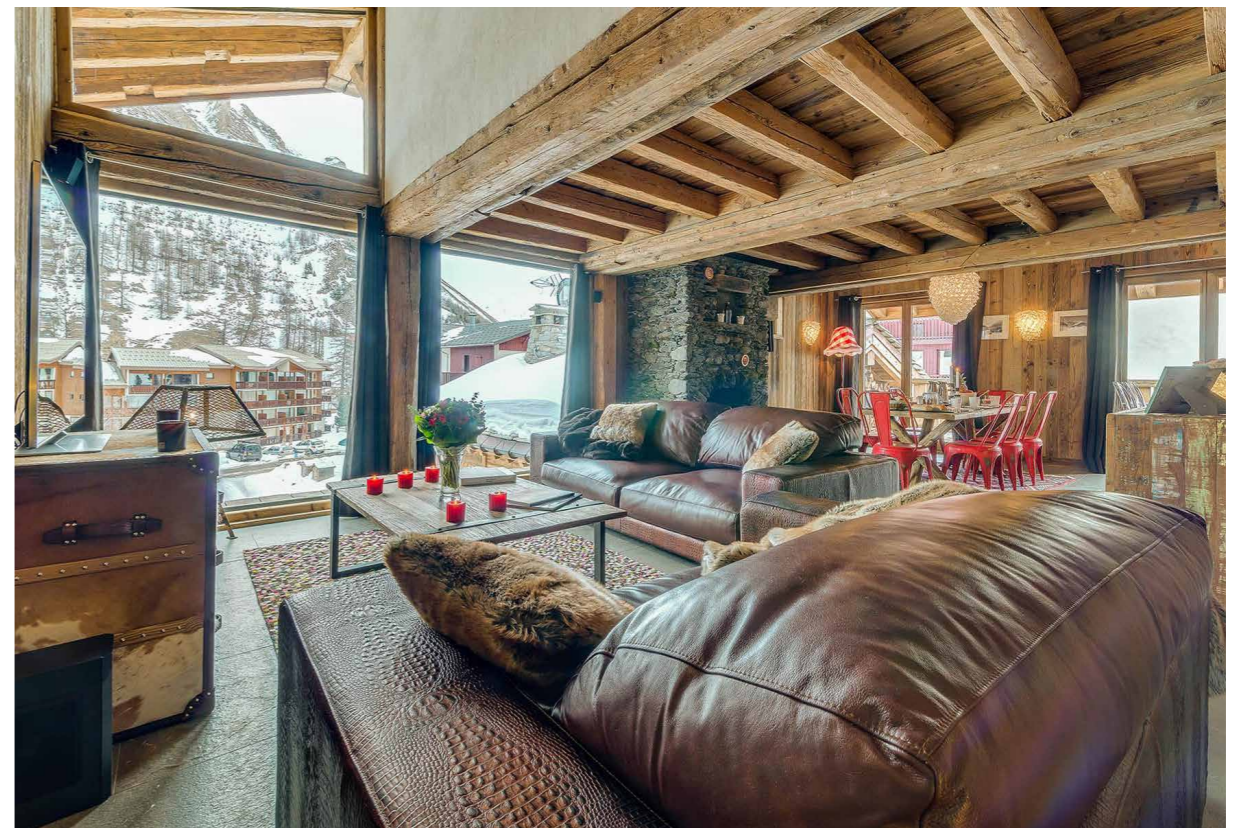
**Bedroom 4:**  
Double bedroom on ground floor with en-suite shower room.

## Eating

Guests at Chalet Jupiter have the choice of two levels of catering.

The self-catered service is ideal for passionate home cooks, or those who'd like to explore Val d'Isère's world-class restaurant scene during their stay. Whether you seek Savoyard specialities, international cuisine, or a fine dining experience, you'll find it in this gourmet destination.

For those who want the ease of catered service but with the freedom to choose their meal times, the contactless catered service is ideal. You'll arrive to find the well-appointed kitchen fully stocked with everything you need for daily breakfasts and afternoon teas, plus pre-prepared three-course dinners, cheese and nibbles on six nights. There are also complimentary drinks, including a Champagne reception to welcome you to the chalet.





# Chalet Jupiter

## Kids

Arriving at Chalet Jupiter with children is hassle-free thanks to the lift pass and equipment delivery services, ensuring you can spend your first evening simply relaxing together by the fire instead of visiting the ski shop.

The chalet itself is tailor-made for families, with a sociable open plan living space where you can watch films together or play games at the dining table. Children will also love taking a dip in the outdoor hot tub. Cots and high chairs are available on request.

When it's time to hit the slopes, the handy in-resort driver service (08:30-10:00 and 16:00-18:00, excluding Saturdays) is available to transport you and your children back and forth. Outside of these times, the resort centre is just a 10-minute walk away that's not too tough on little legs.

## Facilities

- Outdoor hot tub
- Hamman
- Wood-burning fireplace
- Wifi
- Sun terrace
- Parking for two cars
- Fully fitted kitchen
- Open-plan living area

## Location

Chalet Jupiter enjoys a central position in the much sought-after Le Petit Alaska area of Val d'Isère. The town centre is a 10 minute walk away, while the Belvedere Express lift is an 8-10 minute walk or 5-minute drive.

Chambéry is the closest airport, just under 2 hours from the chalet, while Geneva Airport is around 3 hours away.

## Staff

Firefly pre-arrival concierge service

- Chalet staff include:
  - Resort manager
  - Housekeeper
  - In-resort shuttle service
  - In-resort concierge

Additional staff such as nannies and massage therapists can be arranged on request.

