



Manej Apartment 4 Courchevel 1850



What we love...

We love the mountain views from the spacious balconies.

A boutique bolthole in one of the world's most beautiful ski resorts, Manej Apartment 4 is practically perfect in every way.

The property is located close to the pistes and is just a short walk from the centre of Courchevel 1850 so everything is right on your doorstep and a moment is never wasted.

Inside, the neutrally decorated property is relaxing and stylish. Rustic woods and velvet sofas complement each other perfectly, introducing warmth and texture to the calming atmosphere. Muted blues and oranges bring colour to the scheme. The living area is central to the apartment, with a well-equipped kitchen, contemporary dining area and a living space with capacious sofas just made for lounging on after

a long day's skiing. Off the living space, through sliding doors, is a large terrace with uninterrupted views of the mountains – a great spot in which to enjoy a coffee in the mornings before you set out for the day.

In the evenings, you'll all retire to the en-suite bedrooms, designed with a nod to Alpine style and each with their own TV so you can escape to your very own cosy retreat and enjoy some quiet time. Robes, slippers and towels are supplied in each bedroom, along with hairdryers in the bathrooms for a hotel feel.

With a dedicated concierge on hand to attend to your every need, from ski instruction to restaurant bookings, your only job at Manej Apartment 4 is to kick back and relax.



Manej Apartment 4

Rooms

Manej Apartment 4 sleeps 6 guests across three bedrooms.

Bedroom 1:
Double bedroom with en-suite shower room, balcony and TV.

Bedroom 2:
Double bedroom with en-suite bathroom and TV.

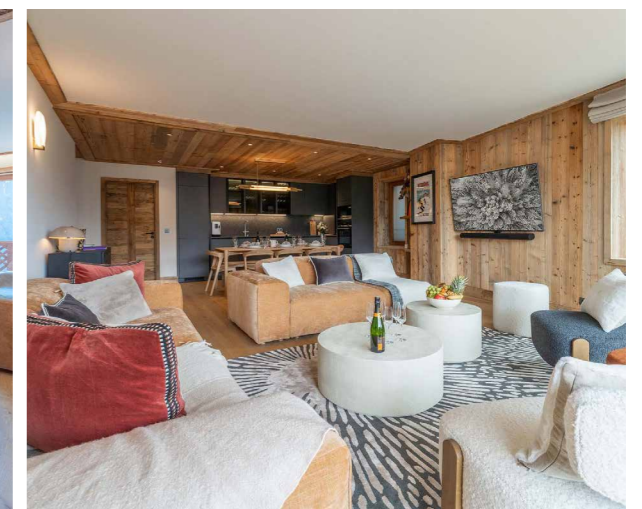
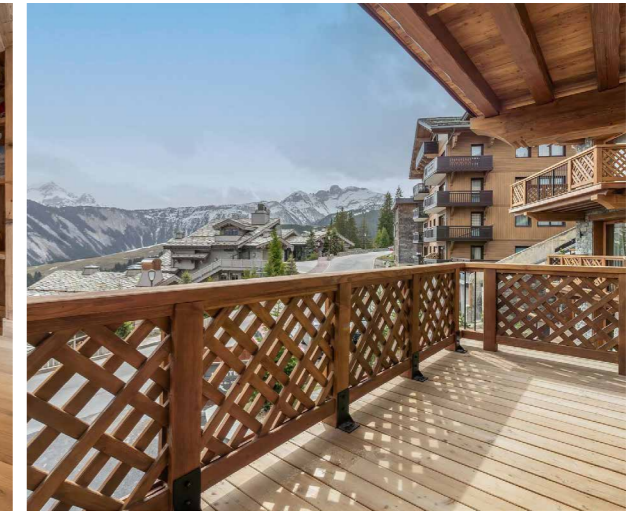
Bedroom 3:
Double bedroom with en-suite shower room and TV.

Eating

This luxury self-catering ski chalet has everything you need to feel well fed and well looked after while still enjoying all the freedom and flexibility of being able to eat wherever and whenever you want.

Manej Apartment 4 has a neat and perfectly formed kitchen and dining space, which is open-plan to the living room, making it a sociable place in which to cook and eat. The stripped wood dining table seats eight people comfortably and is close to the kitchen to make preparing meals easy. Sleek cabinetry and top-of-the-range kitchen equipment makes cooking a real pleasure.

The resort staff will be only too happy to make restaurant recommendations in the local area and help you make bookings.





Manej Apartment 4

Kids

Manej Apartment 4 is a family-friendly luxury ski chalet in Courchevel with everything a family could need for a relaxing self-catering break.

Each of the three en-suite bedrooms has its own TV so kids can watch cartoons in the mornings without disturbing anyone else and teens can hide away with a film when they need a little space of their own.

A cot and highchair are available for those bringing younger guests to help make packing easier.

Childcare and ski lessons can be booked on request.

Staff

Firefly pre-arrival concierge service

Chalet staff include:
Housekeeper (self-catered basis)
In-resort concierge service

Additional staff such as nannies and massage therapists can be arranged on request.

Location

Manej Apartment 4 is located close to the pistes, so you can be out exploring the 3 Valleys in no time. The Cospillot piste is approximately 1 minute walk away; from here, you can take the drag lift up to the Pralong or ski down to Courchevel 1550. Alternatively, the Bellecote piste is approximately 5 minute walk away from the property.

The resort centre itself is 15 minutes away, allowing you to explore all of Courchevel's shops, bars and restaurants.

The nearest airports are Lyon, 1 hour 40 minutes away, and Geneva, just over 2 hours away. Moutier Railway Station is just steps from the property and Courchevel also has its own altiport for private flights.

Facilities

Wifi
Balconies
Laundry facilities
Private ski locker
Mountain views
Fully fitted kitchen
Smart TV
Open-plan living area
Close to Cospillot piste

