



## Red Chalet Algarve



### What we love...

We love the 'secret terrace', hidden off the main rooftop terrace, and built many years ago so the owner could hear the townsfolk in church, singing songs dedicated to the local fishermen.

Perched on the edge of the sea, in the charming area of Armação de Pêra in the Algarve, sits the Red Chalet. It's been something of a local landmark for more than a century and has recently been refurbished to become a luxury seafront holiday house.

Inside, many of the original features have been retained, including antique chandeliers and a beautiful original staircase. Rich colours – particularly deep reds – and vibrant pattern make this a jewel of a house both inside and out.

The colourful living spaces, with huge houseplants and sparkling chandeliers, have the feel of a Victorian orangerie. In the upstairs lounge, a terracotta terrace opens out to offer fabulous ocean views for you to sit and enjoy from the comfort of a capacious armchair. Downstairs, a light, elegant dining room off the main living area offers a backdrop for meals to remember, and a very well-equipped kitchen means you have all you need for putting together meals to enjoy outside in the al fresco dining space.

With direct access to the beach, you're never far from feeling the waves lap your feet, and if you prefer your daily dips a little warmer try the private outdoor pool by

the sun terrace. To ensure your complete relaxation, there's also a wellness area with sauna and treatment room where you can enjoy a pampering massage or facial.

The Red Chalet's sleeping quarters offer lots of flexibility and privacy, making this a wonderful property for groups of friends or family. Two luxury en-suite bedrooms in the main house have king-size beds and walk-in wardrobes, as well as a second lounge from which to take in the wonderful views of the sea. Meanwhile, the White house just to the side of the main villa, offers a living room and terrace with an en-suite bedroom upstairs. There's also a self-contained studio bedroom with its own shower room. The arrangement means that while there are plenty of communal spaces to gather in together.

With beachfront restaurants on your doorstep and the charming historic centre of Armação de Pêra just moments away, this stunning property couldn't be better located to enjoy the best of all worlds. It's also just a five-minute drive from Vila Vita Parc, where as a guest of the Red Chalet, you can make use of the health club, swimming pools, Spa by Sisley Paris, restaurants, bars and sports facilities.





# Red Chalet

## Rooms

Red Chalet sleeps 8 guests across four bedrooms.

Main house

Bedroom 1

Double bedroom on the first floor with king-size bed, en-suite bathroom and sea views

Bedroom 2

Double bedroom on the first floor with king-size bed, en-suite bathroom and sea views

White house

Bedroom 3

Double bedroom on the first floor with king-size bed and en-suite bathroom and sea views

Bedroom 4

Double bedroom on the ground floor with king-size bed and en-suite shower room

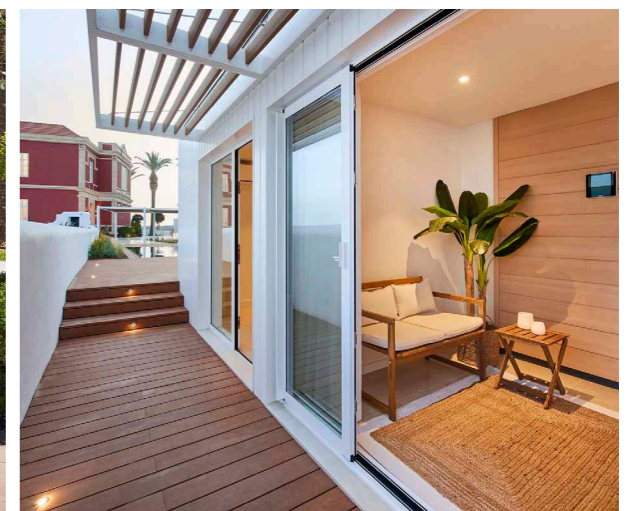
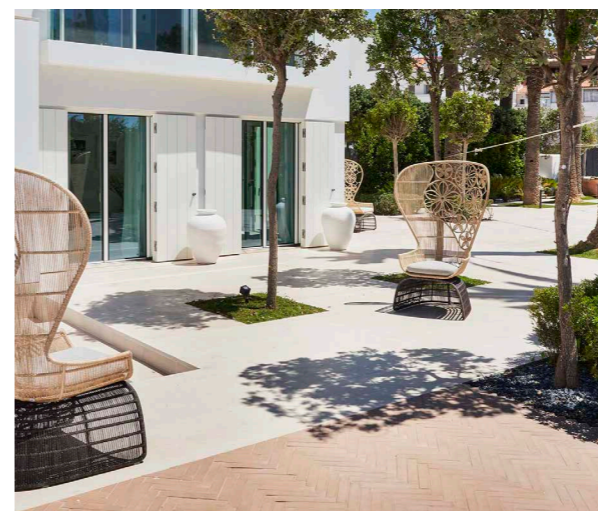
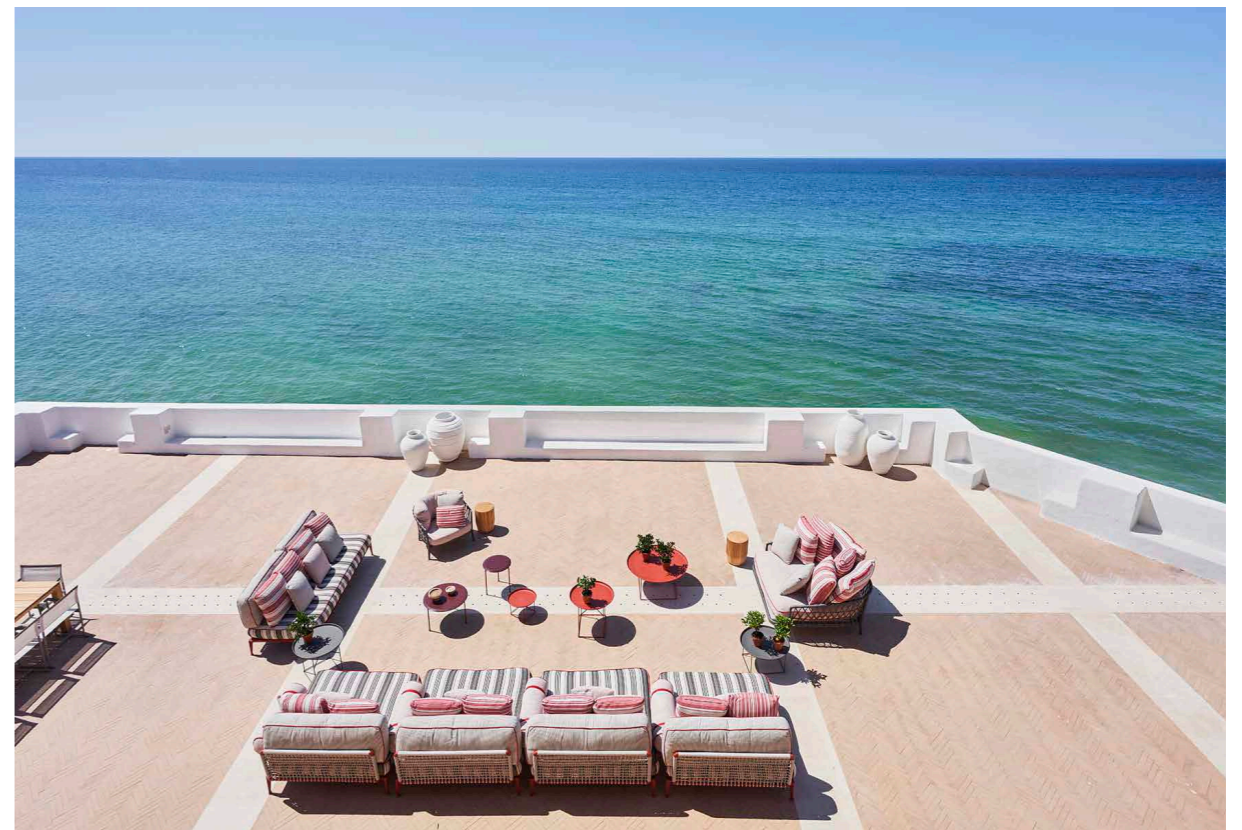
## Eating

This area of Portugal is known for its excellent food and particularly its seafood, so there's lots to explore in the local towns and, when you arrive, a welcome hamper of goodies will be waiting for you.

Back at the Red Chalet, you'll wake each morning to a continental breakfast so you can enjoy a lazy start to the day, hopefully outside as the sun warms the terrace.

The al fresco dining area seats 10 comfortably and is a wonderful spot to enjoy a delicious breakfast and plenty of good coffee, or to sit late into the evening with local specialities bought from the market, and a bottle or two of wine. There's also a barbecue area for enjoying a few steaks or perhaps fresh sardines, with the sound of the sea nearby.

Indoors is a well-equipped kitchen where you can cook, and an elegant dining area for cooler days.







# Red Chalet

## Kids

Children are welcome at this family-friendly beachfront holiday house. They'll love the proximity to both the sea and the town and there's lots to do within a short drive of the Red Chalet to keep them entertained.

There's plenty to keep them busy back at your holiday home, too, with a heated pool – perfect for warming up after a splash in the sea – and flatscreen TVs indoors where they can lounge and watch cartoons in the evenings.

For teens and older kids, the small guest house and self-contained studio will give them a bit of space of their own.

Nannies and babysitters can be arranged on request.

## Staff

Firefly pre-arrival concierge service

Villa staff include:

Housekeeper

In-resort concierge service

Additional staff such as a chef, nannies and massage therapists can be arranged on request for an additional charge.

## Location

Red Chalet is a luxury holiday home in the Algarve, nestled in the beautiful resort of Armação de Pêra, part of the prestigious Vila Vita hotel. The property has direct access to Armação de Pêra beach and is only 10km from Benagil beach, too.

It's a short walk to the centre of town and Algarve and Albufeira are both within striking distance, too.

The nearest airports are at Faro (35 minutes away) and Lisbon (2.5 hours away).

## Facilities

- Outdoor swimming pool
- Sauna
- Fully-equipped kitchen
- Air-conditioning
- Security system
- Private parking
- Sun terrace
- Direct access to the beach
- Wellness area with treatment room
- Al fresco dining area with barbecue
- Access to Vila Vita Parc Resort facilities: swimming pools/health club/Spa by Sisley Paris/restaurants/bars and sports facilities

