



Apartment Nanuq Meribel



What we love...

We love the cosy reading nook up, looking out over the living spaces.

Set right on the edge of the piste, this luxury ski chalet in Meribel is in the middle of all the action. You're just minutes by car from the centre of town and can ski straight out onto the snow from your door.

Inside, Apartment Nanuq is a contemporary and stylish retreat from the world. Mid-century modern furniture and pretty, muted shades bring both calm and character. The main living area is open-plan in design, giving everyone space to socialise easily. At the heart of it is a focal-point fireplace surrounded on each side by huge, squashy sofas and chairs for lounging in with the papers, or chatting with family and friends over a glass of wine. In the dining area a beautiful oak table takes centre stage, and nearby is a stunning kitchen with wooden cabinetry and a large island – because we all know the best parties happen in the kitchen!

French windows allow light to flood into the living spaces, and also open up to give access to spacious balconies for eating, socialising and quietly taking in the mountain views.

If you should feel in need of a bolthole to escape to for some peace, however, you are equally spoiled for choice. On the second floor is a Hammam with its own shower, where you can soothe any aching limbs picked up on the slopes. There's also a separate TV room with bar and uber-comfy seating for serious chilling out time. There's even an inviting book nook, set out with chairs, where you can get stuck into some quiet reading.

However you choose to spend your time at Apartment Nanuq, you'll know you'll be guaranteed a good night's sleep in the beautifully designed Alpine-style bedrooms, kitted out with luxury linens, spa-style bathrooms and everything you could need for sweet dreams.



Apartment Nanuq

Rooms

Apartment Nanuq sleeps 12 + 2 guests across seven bedrooms.

Bedroom 1:
Master bedroom on first floor with en-suite bathroom and balcony access.

Bedroom 2:
Double bedroom on first floor with en-suite bathroom and balcony access.

Bedroom 3:
Double bedroom on first floor with en-suite shower room.

Bedroom 4:
Double bedroom on second floor with en-suite shower room.

Bedroom 5:
Double bedroom on second floor with en-suite shower room.

Bedroom 6:
Double bedroom on top floor with shared family bathroom.

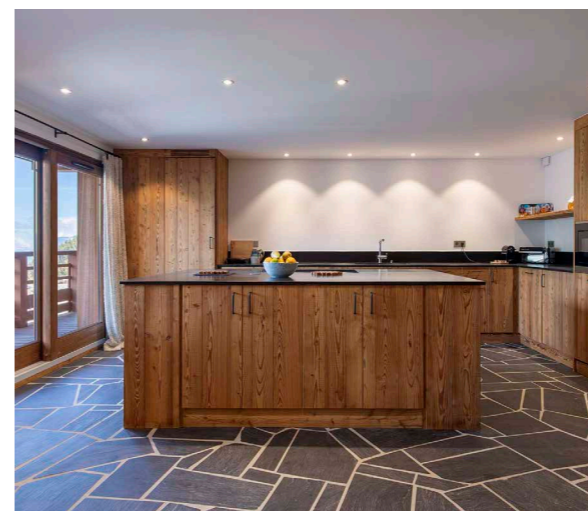
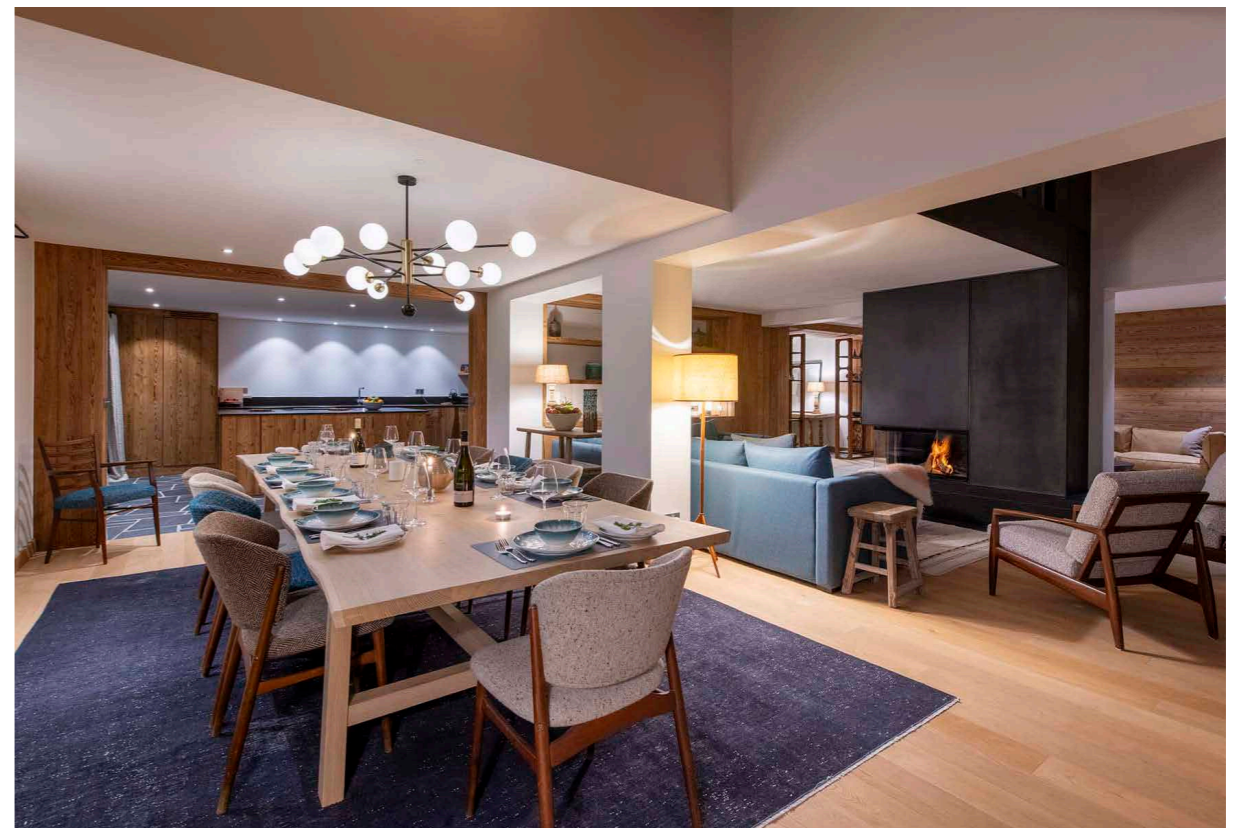
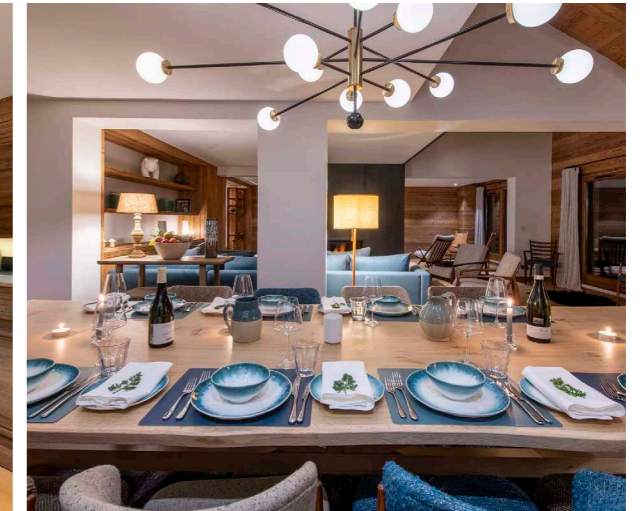
Bedroom 7:
Bunk room on top floor with shared family bathroom.

Eating

Apartment Nanuq is offered on a self-catered basis, allowing you to tailor your ski holiday to best suit your plans.

Cooking for your party is made easy by the stylish kitchen with sociable island area and all the equipment you could need. Close by is an oak dining table seating 14 people; a lovely backdrop for leisurely meals with friends.

When it comes to dining out, you're spoilt for choice in Meribel and your in-resort concierge will be able to assist you with restaurant recommendations and reservations.





Apartment Nanuq

Kids

Apartment Nanuq is a luxury family-friendly ski chalet that can accommodate a family group of 14. It's close to the piste, which makes getting out in the mornings easy, and you can ski all the way back to the door.

On snowy afternoons, post-ski, children might like to curl up in front of a movie in the separate TV room. The apartment includes one bunk room which is ideal for children to share.

Nannies and babysitters can be arranged on request.

Location

Apartment Nanuq is located at the Rond Point des Pistes, next to the green 'Foret' run for ski-in/ski-out access. You can easily ski to the Adret lift or further down to the main Chaudanne lift hub.

The nearest airport is at Chambéry, 1 hour 15 minutes away, or Lyon, just under 2 hours away. Grenoble and Geneva are each around 2 hours away, too.

Staff

Firefly pre-arrival concierge service

Chalet staff include:
Housekeeper
In-resort concierge service

Additional staff such as nannies and massage therapists can be arranged on request.

Facilities

Ski-in/ski-out
Shared ski locker
Hamam
Wood-burning fireplace
Balcony
Mountain View
TV room and bar

