



Basalte Penthouse Verbier



What we love...

We love the hot tub on the terrace where you can soothe your muscles in the shadow of the mountain.

Get that on-top-of-the-world feeling at this luxury penthouse ski apartment in Verbier. Basalte Penthouse sits at the top of a prestigious building, a short walk from the centre of Verbier and just steps from the Medran lift station, so you'll never waste a moment of your holiday getting to the snow.

Take the internal lift to the top floor of the building and the doors open into a luxurious and cosy Alpine bolthole. Vaulted ceilings and floor-to-ceiling windows give a cathedralesque feel and allow light to flood into the living spaces of the penthouse.

The whole property is decorated in Alpine style, using natural materials including wood and stone, which bring a relaxed, zen atmosphere. The living space has a roaring fire as its focal point, with huge sofas gathered around it for chatting, reading, lounging and movie-watching. In the nearby dining

space, a long table is gently lit by beautiful pendant lights for atmospheric meals.

Doors open from the main living space onto the sunny balcony, which has an outdoor hot tub where you can soak away any everyday stresses alongside a glass of bubbly. There is also seating from which to enjoy the stunning mountain views.

A huge part of ensuring any holiday is totally relaxing, is to ensure a good night's sleep. And Basalte Penthouse's designers have done exactly that. Four en-suite bedrooms have been put together with your total comfort in mind. Three of the rooms have access to a balcony so you can take in the mountain air and the awesome views each morning before you even get your hands on your first coffee, and before you turn in for bed, you can pop outside with a nightcap to watch the stars twinkling over Verbier.



Basalte Penthouse

Rooms

Basalte Penthouse sleeps 8 guests across four bedrooms.

Bedroom 1

Master double bedroom with en-suite shower room, TV and balcony access

Bedroom 2 & 3

Double bedrooms with en-suite shower rooms, TVs and balcony access

Bedroom 4

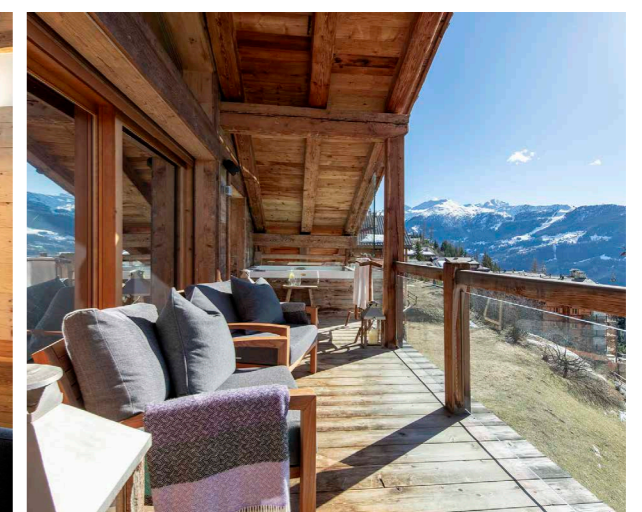
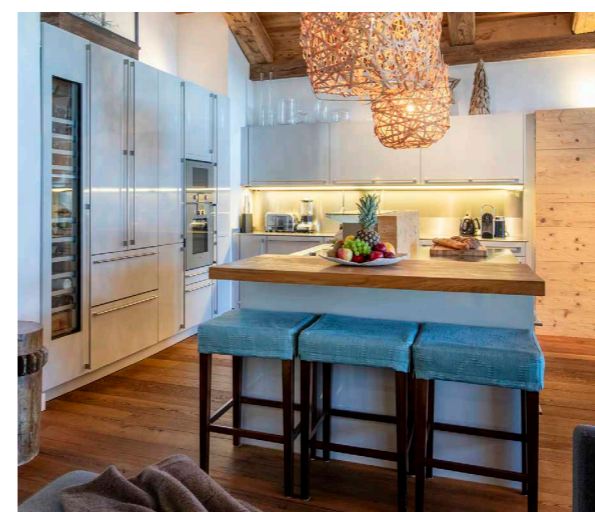
Double bedroom with en-suite shower room and TV

Eating

This luxury self-catered ski chalet offers total flexibility, allowing you to enjoy relaxed meals at home as well as make the most of Verbier's vibrant food scene.

Basalte Penthouse has a very well-equipped kitchen with all you could need to cater for your group, including the all-important wine fridge. A breakfast bar provides sociable space for a coffee in the morning or a couple of cocktails while you cook dinner together. Nearby is a dining area with a table seating eight people beneath a statement pendant light.

Being centrally located, you're perfectly placed to explore the large range of Verbier's excellent restaurants and the in-resort staff will be pleased to assist with restaurant suggestions and reservations.





Basalte Penthouse

Kids

Children are given a warm welcome at Basalte Penthouse. When you do venture out of your luxury ski chalet with the kids, you're perfectly placed to do so with both the lift station and charming resort centre just moments away.

Each of the bedrooms has its own TV, so kids can escape to their room to watch cartoons in the afternoons. A cot and highchair are available for those travelling with very young children.

Nannies and babysitters can be booked on request.

Location

This luxury ski chalet in Verbier is centrally located, just a short walk to Place Centrale.

The main Medran lift station is a stone's throw from the apartment and the Savoleyres lift station is a five-minute drive away.

The nearest airport is Sion, 45 minutes away. Geneva airport is 1 hour 45 minutes away.

Staff

Firefly pre-arrival concierge service

Chalet staff include:
Housekeeping
In-resort concierge service

Additional staff such as nannies and massage therapists can be arranged on request.

Facilities

Outdoor hot tub
Wood-burning fireplace
Wifi
Well-equipped kitchen
Ski and boot room
South-facing balcony
Mountain views
Lift access
Open-plan living area
Central location
2 indoor parking spaces

