



Chalet Pia Ciampei, Dolomites



What we love...

We love the unique spa, built entirely using natural materials from the area, and by local craftspeople.

Hunker down in one of the most enchanting ski chalets we've seen. Chalet Pia is a one-of-a-kind property, built from highly scented spruce wood, known to help you breathe and sleep more deeply, in traditional Alpine style.

Step into the 'stube' or kitchen parlour and it's like stepping back in time, with pretty carved wood tables and chairs bringing the feel of a cosy mountain farmhouse.

The warm and welcoming living space, with roaring fire and a plasma TV, is the perfect place to relax with a glass of wine and a book after an energetic day skiing the Sellaronda.

If you like your R&R with a side of pampering, however, head down to the private spa for a massage or sauna, or escape to the hot tub, with gorgeous panoramic views of the Dolomites.

Each of Chalet Pia's seven en-suite bedrooms is designed to be a comforting cocoon for you to hide away in, with goose-down pillows to help you drift off to a restful sleep.

Set among quiet meadows, there's lots of outdoor space to explore and mountain air to enjoy here. And the large terraces provide a place to wrap up warm for stargazing in the evenings.



Chalet Pia

Rooms

Chalet Pia sleeps 14 + 1 guests across seven bedrooms.

Bedroom 1 & 2

Double/twin bedrooms on the top floor with en-suite shower rooms

Bedroom 3

Master double/twin bedroom on the first floor with en-suite bathroom, lounge area and private balcony access

Bedroom 4

Double/twin bedroom on the first floor with en-suite bathroom

Bedroom 5

Double bedroom on the first floor with en-suite shower room

Bedroom 6

Double/twin bedroom on the lower ground floor with additional single bed with en-suite shower room

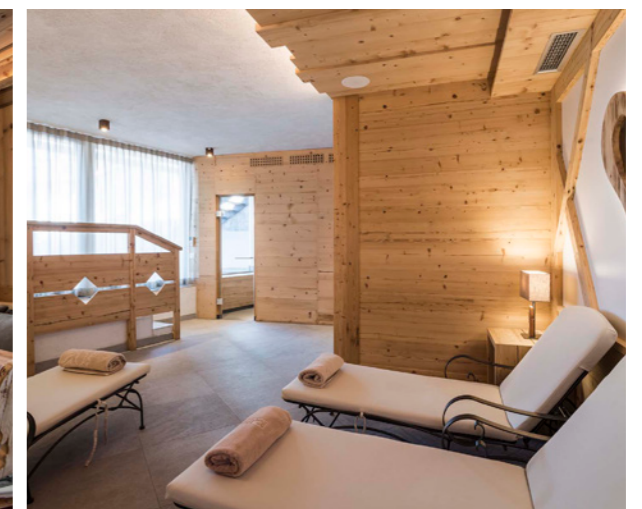
Bedroom 7

Double/twin bedroom on the lower ground floor with a separate shower room located in the wellness area

Dining

Chalet Pia is a luxury self-catering chalet in the Dolomites with all the gadgets and equipment you could need. The well-equipped kitchen has a Liebherr fridge and Miele dishwasher as well as microwave, oven and six-plate hob, allowing you to easily cater for a crowd. The traditional wooden 'stube' or parlour has several tables, allowing you all to eat in a sociable manner in small groups.

If you prefer, a private chef is available on request, for an additional cost, to cater for your stay.





Chalet Pia

Kids

This luxury ski chalet in Ciampei is set in a peaceful location, surrounded by fields and with views of the Dolomites.

Children will enjoy the wide open spaces to play in. The pony farm next door, which you can visit, is sure to be a hit, too.

For those travelling with babies, cots and highchairs are available and nannies and babysitters can be booked on request.

Features

- Outdoor hot tub
- Fireplace
- Hammam
- Sauna
- Wine cellar
- Mountain views
- Separate dining area
- Treatment room

Location

Set in a quiet and sunny spot in Ciampei, Chalet Pia enjoys a peaceful location surrounded by farmland and with stunning views of the Dolomites.

The entrance to the Sellaronda is just 10km, approximately 15 to minute drive, from the chalet. Your own transportation is essential for your stay at Chalet Pia.

The nearest airport is Bolzano, 1 hour 15 minutes' drive away. Innsbruck is 1 hour 30 minutes away. Verona and Venice are around 2 hours 30 minutes. Salzburg and Munich are each less than 3 hours 30 minutes.

